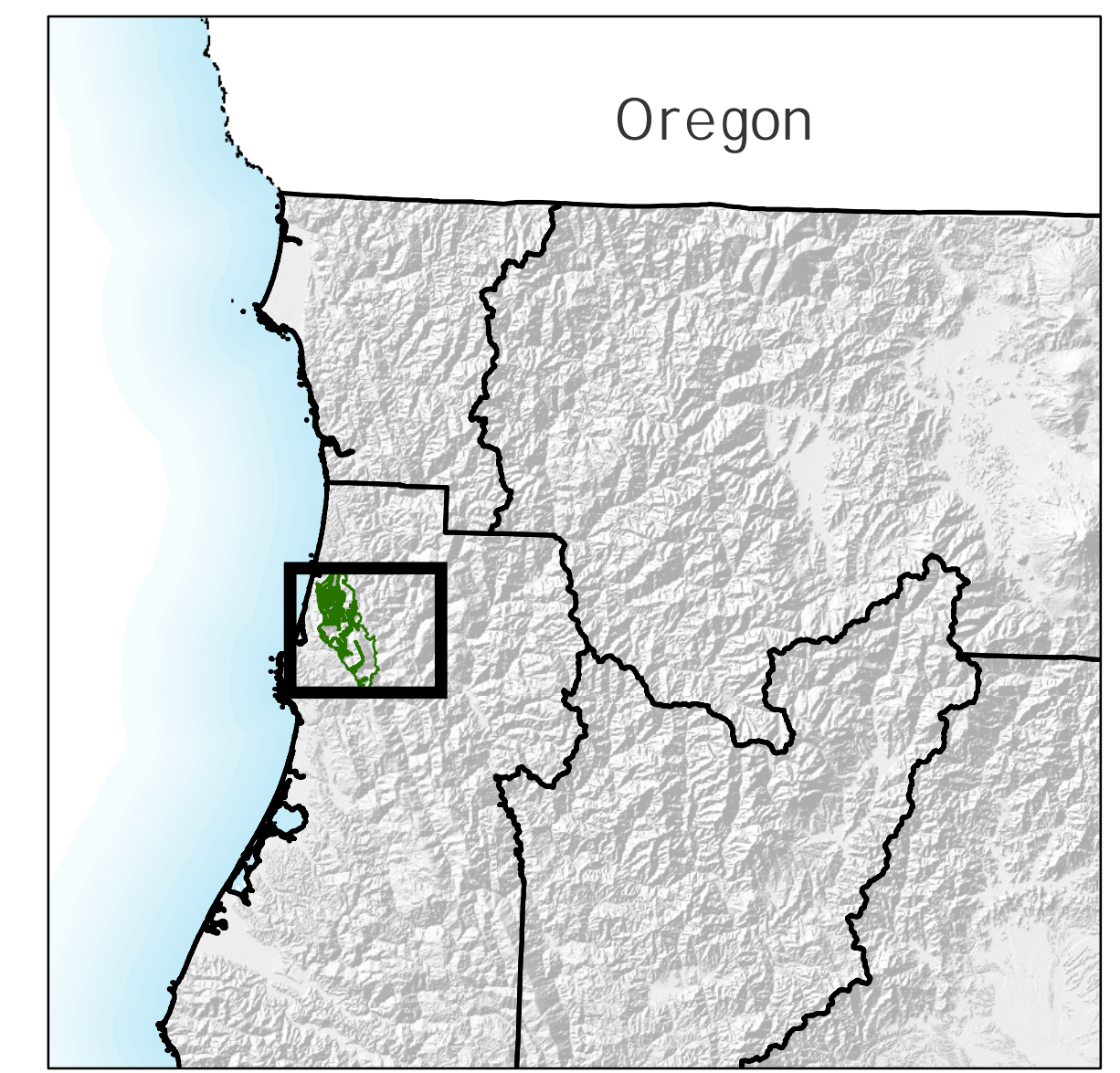
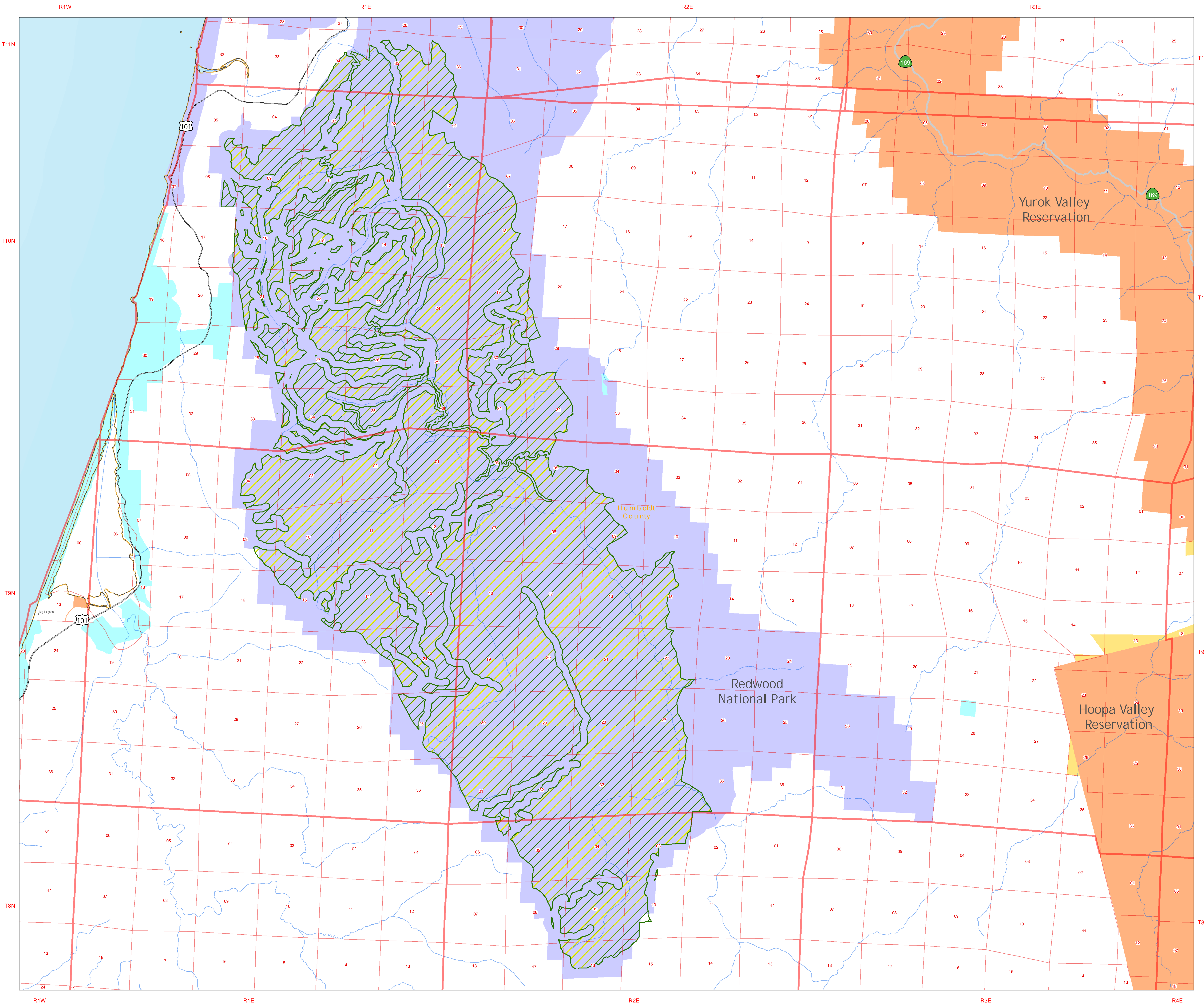


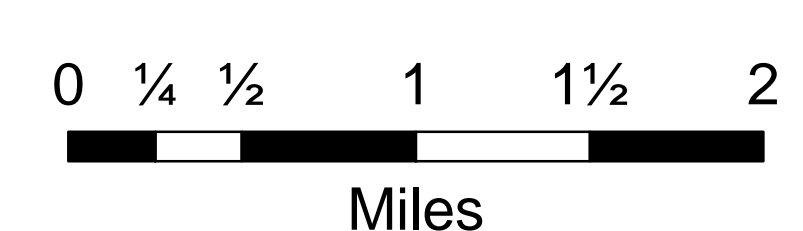
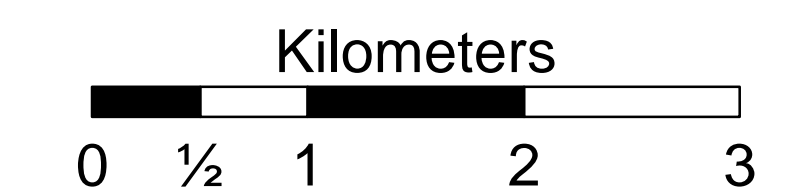
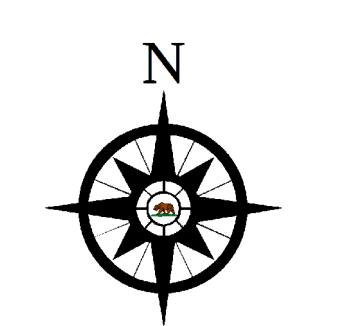
# Redwood National Park - Potential Wilderness

October 9, 2019

This map prepared at the request of Representative Jared Huffman



- Redwoods National Park Potential Wilderness
- Land Status**
- Bureau of Land Management
- National Park Service
- Bureau of Indian Affairs
- State
- Private/Unclassified



1:35,000

Map intended to be plotted at a sheet size of 34" x 44"

No warranty is made by the Bureau of Land Management (BLM). The accuracy, reliability, or completeness of these data for individual use or aggregate use with other data is not guaranteed.

